



DAVIS  
DESIGN



**GRUBB & ELLIS.**  
Pacific Realty

**AIRPARK WEST**  
LINCOLN, NEBRASKA

# AIR PARK WEST

A COMBINED RAIL & TRUCK CENTER IN LINCOLN, NEBRASKA



## An Exceptional Location For Warehouse Distribution, Light Manufacturing and Assembly

### In the center of everything

- Lincoln, Nebraska, is in the geographic center of the nation on Interstate 80.
- All major Midwestern markets are accessible within a single day's drive.
- Maximize logistics efficiencies with truckload service available anywhere in the country within three days and all domestic destinations are accessible by rail within four days.

### Unlike any other site in the country

- Airpark West is one of the only sites in the country served by two rail lines, Burlington Northern and Union Pacific.
- Includes "free trade zone."
- The site is also just minutes away from the Lincoln Airport terminal connecting tenants to over 400 locations every day with a 12,500 square-foot runway.

### Combined rail and truck center

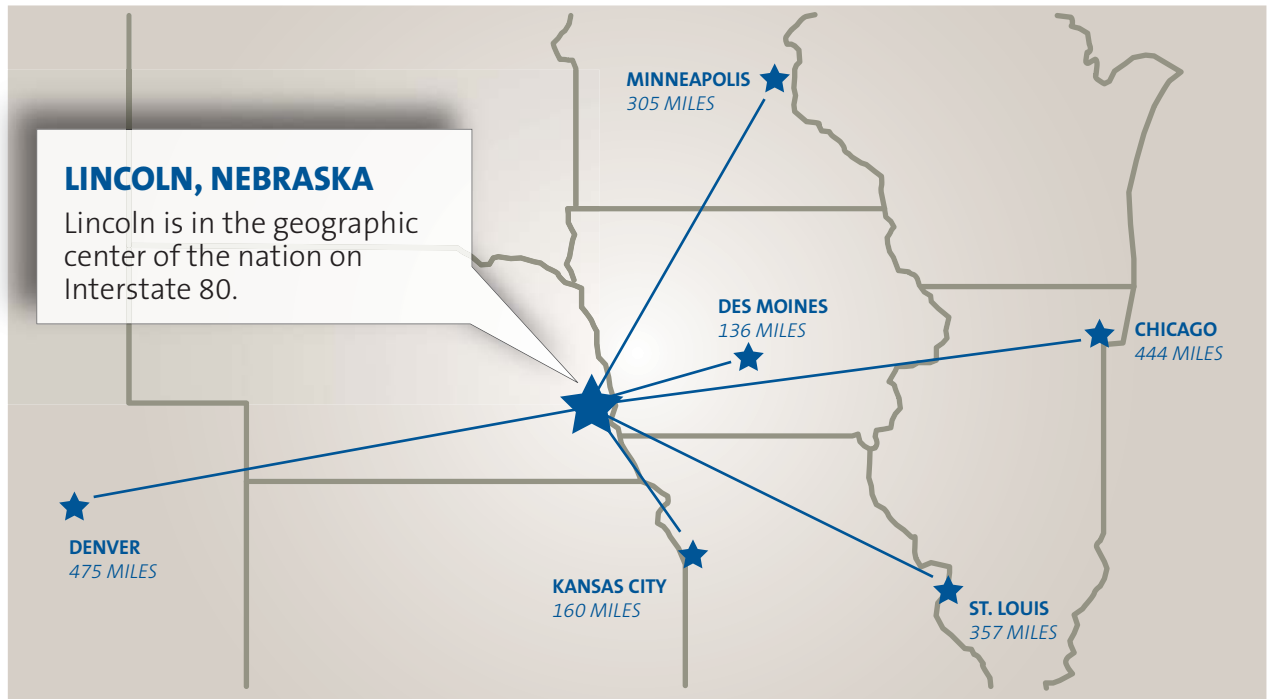
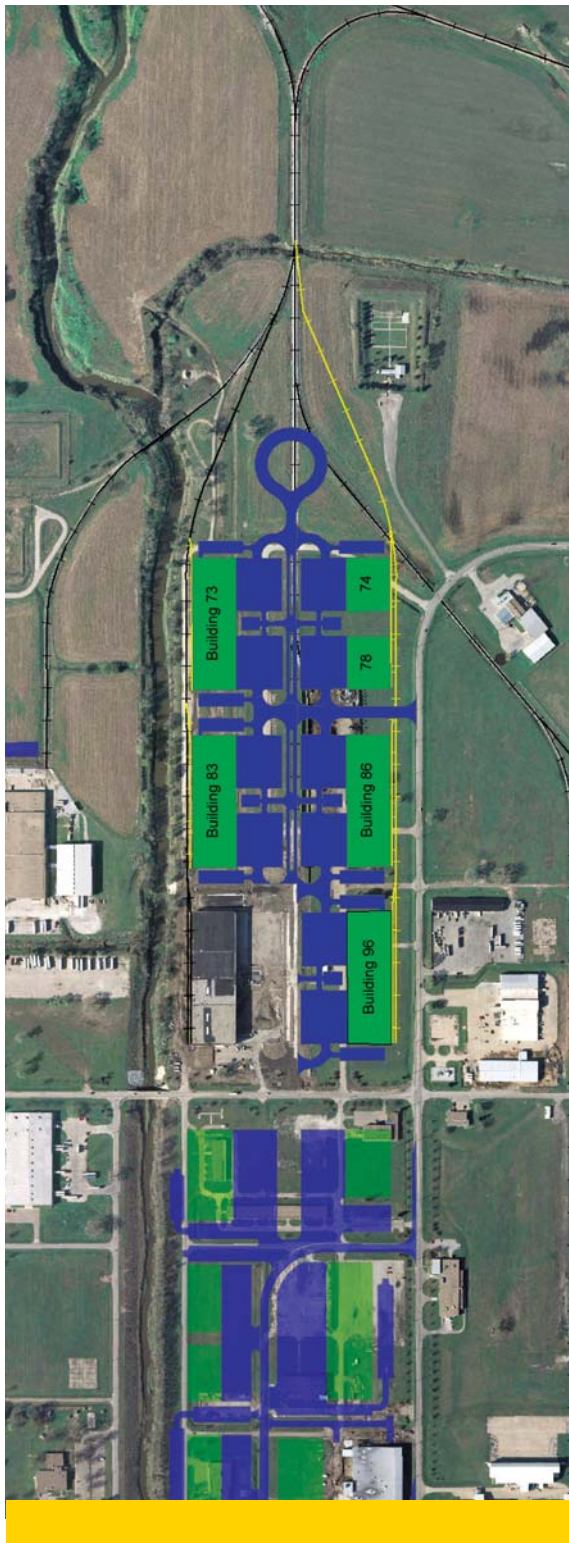
- Airpark Rail Center is a new, 60-acre development with the first 100,000 square-foot building fully occupied (shown at left).

- When completely finished, the Rail Center will hold six, 100,000 square-foot, precast concrete buildings including two bays per building, allowing each structure to easily accommodate one or two tenants.
- The adjacent Airpark Truck Center can accommodate buildings of 100,000 to 200,000 square-feet.

*Airpark West is an industrial park situated in the geographic center of the country.*

*Rail spurs serve each of six 100,000 square-foot buildings with air terminal access just minutes away.*





**LINCOLN, NEBRASKA**

Lincoln is in the geographic center of the nation on Interstate 80.

To learn more, please contact:



Omaha 402.345.5866 Lincoln 402.467.1234  
 web site [gepacificrealty.com](http://gepacificrealty.com)



**John D. Waldbaum**  
 Vice Chairman  
[jwaldbaum@gepacificrealty.com](mailto:jwaldbaum@gepacificrealty.com)



**Don Linscott**  
 Executive Associate  
[dlinscott@gepacificrealty.com](mailto:dlinscott@gepacificrealty.com)



**Michael W. Miller**  
 Executive Vice President  
[mmiller@gepacificrealty.com](mailto:mmiller@gepacificrealty.com)